



Instruction Manual

Lullaby Lambs Mobile



VTech understands that a child's needs and abilities change as they grow and with that in mind we develop our toys to teach and entertain at just the right level...

vtech Baby

Toys that will stimulate their interest in different textures, sounds and colours

I am...

...responding to colours, sounds and textures

...understanding cause and effect

...learning to touch, reach, grasp, sit-up, crawl and toddle

Birth-36 months



Pre-School

Interactive toys to develop their imagination and encourage language development

I want...

...to get ready for school by starting to learn the alphabet and counting

...my learning to be as fun, easy and exciting as can be

...to show my creativity with drawing and music so my whole brain develops

3-6 years



Electronic Learning Computers

Cool, aspirational and inspiring computers for curriculum related learning

I need...

...challenging activities that can keep pace with my growing mind

...intelligent technology that adapts to my level of learning

...National Curriculum based content to support what I'm learning at school

4-10 years



To learn more about this and other VTech® products, visit www.vtech.co.uk

INTRODUCTION

Thank you for purchasing the **Lullaby Lambs Mobile by VTech®**. Gently soothe your baby to sleep with the soothing Lullaby Lambs Mobile. 3 modes of play allow a selection of nature and white noise sounds to play with 4 sing-along songs and 40 melodies. Watch the 3 soft fabric lambs gently spin while the music plays and the multicoloured lights fade in and out from the projector.

Nature Sounds
Button

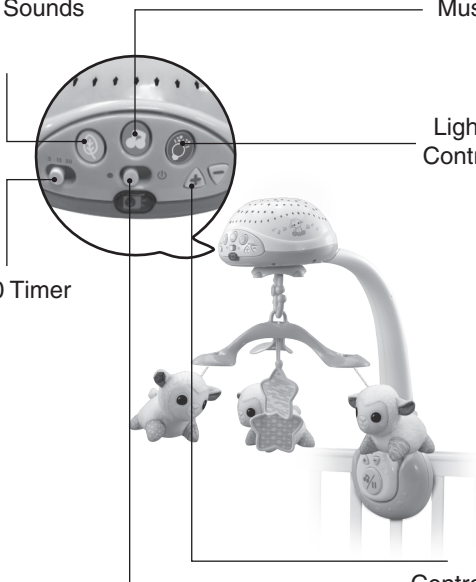
Music Button

Light & Motor
Control Button

5/15/30 Timer
Switch

On/Off
Switch

Volume
Control Buttons



INCLUDED IN THE PACKAGE

- One Instruction Manual



One remote control



One C ring



One ring attachment



Four screws



One mobile support post



Two plastic stars



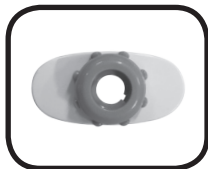
Three soft fabric lambs



Projector/mobile



Base unit



Chunky screw

WARNING:

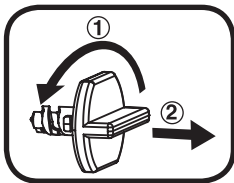
All packing materials, such as tape, plastic sheets, packaging locks, removable tags, cable ties, cords and packaging screws are not part of this toy, and should be discarded for your child's safety.

NOTE:

Please keep this Instruction Manual as it contains important information.

Removing the Packaging Lock:

- ① Turn the packaging lock anticlockwise several times.
- ② Pull out and discard the packaging lock.

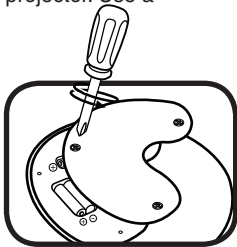


GETTING STARTED

Battery Removal and Installation

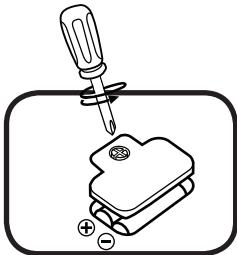
Lullaby Lambs Mobile

1. Make sure the unit is turned **Off**.
2. Find the battery cover located under the projector. Use a screwdriver to loosen the screws and then open the battery cover.
3. Remove old batteries by pulling up on one end of each battery.
4. Install 3 new AA (AM-3/LR6) batteries following the diagram inside the battery box. (For best performance, alkaline batteries or fully charged Ni-MH rechargeable batteries are recommended).
5. Replace the battery cover and tighten the screws to secure.



Remote Control

1. Find the battery cover located on the back of the remote control. Use a screwdriver to loosen the screw and then open the battery cover.
2. Remove old batteries by pulling up on one end of each battery.
3. Install 2 new AAA (AM-4/LR03) batteries following the diagram inside the battery box. (For best



performance, alkaline batteries or fully charged Ni-MH rechargeable batteries are recommended).

4. Replace the battery cover and tighten the screw to secure.

WARNING:

Adult assembly required for battery installation.
Keep batteries out of reach of children.

IMPORTANT: BATTERY INFORMATION

- Insert batteries with the correct polarity (+ and -).
- Do not mix old and new batteries.
- Do not mix alkaline, standard (carbon-zinc) or rechargeable batteries.
- Only batteries of the same or equivalent type as recommended are to be used.
- Do not short-circuit the supply terminals.
- Remove batteries during long periods of non-use.
- Remove exhausted batteries from the toy.
- Dispose of batteries safely. Do not dispose of batteries in fire.

RECHARGEABLE BATTERIES:

- Remove rechargeable batteries from the toy before charging.
- Rechargeable batteries are only to be charged under adult supervision.
- Do not charge non-rechargeable batteries.

Disposal of batteries and product



The crossed-out wheellie bin symbols on products and batteries, or on their respective packaging, indicates they must not be disposed of in domestic waste as they contain substances that can be damaging to the environment and human health.

The chemical symbols Hg, Cd or Pb, where marked, indicate that the battery contains more than the specified value of mercury (Hg), cadmium (Cd) or lead (Pb) set out in the Batteries and Accumulators Regulation.



The solid bar indicates that the product was placed on the market after 13th August, 2005.

Help protect the environment by disposing of your product or batteries responsibly.



VTech® cares for the planet.

Care for the environment and give your toy a second life by disposing of it at a small electricals collection point so all its materials can be recycled.

In the UK:

Visit www.recyclenow.com to see a list of collection points near you.

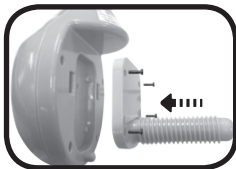
In Australia & New Zealand:

Check with your local council for kerbside collections.

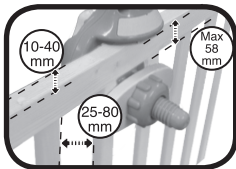
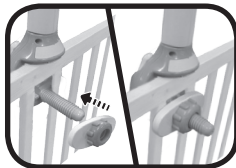
ASSEMBLY INSTRUCTIONS

With the **VTech® Lullaby Lambs Mobile** safety comes first. To ensure your child's safety, adult assembly is required.

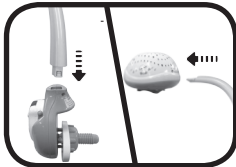
1. Tighten the screws to secure the base cover.



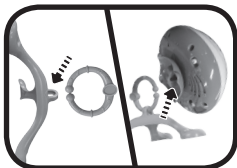
2. Attach and tighten the base to the cot using the chunky screw. Kindly note the spacing between the rails of cots should be between 25mm and 80mm wide. The cross rail should not be taller than 58mm, and the thickness should be between 10mm and 40mm.



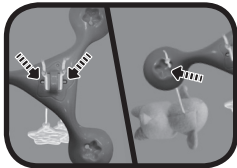
3. Insert the thick end of the mobile support post into the base of the mobile, then insert the thin end of the mobile support post into the back of the mobile. You will hear a click when the post is inserted correctly.



4. Connect the ring attachment into the bottom of the mobile using the C ring.



5. Attach the lambs to the three branches of the ring attachment, and the stars to the middle hole of the ring attachment. The mobile is now ready for use.



WARNING:

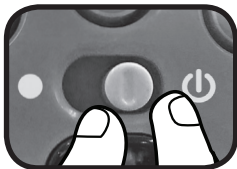
Adult assembly required. This package contains small parts. For your child's safety, do not let your child play with the toy until it is fully assembled.

Attach this toy out of the reach of the child. To prevent possible injury by entanglement, remove this toy when the child starts trying to get up on its hands and knees in a crawling position.

PRODUCT FEATURES

1. On/Off Switch

To turn the Mobile **On**, slide the **On/Off Switch** to the **On** (⏻) position. To turn the Mobile **Off**, slide the **On/Off Switch** to the **Off** (●) position.



2. Automatic Shut Off

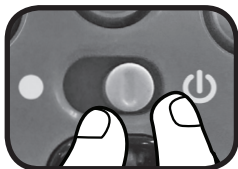
To preserve battery life, the **VTech® Lullaby Lambs Mobile** will automatically shut off after approximately 12 hours without input. The mobile can be turned on again by pressing any button. Pressing a button on the remote will not activate the mobile after 12 hours of no input.

NOTE: If the mobile repeatedly powers down while playing, we suggest changing the batteries.

ACTIVITIES

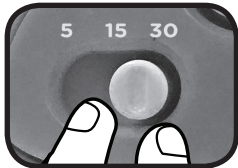
1. On/Off Switch

Slide the **On/Off Switch** to the **ON** position (⏻) to turn the unit **ON**. You will hear 4 soothing songs, then 20 soft melodies with nature sounds. The light pattern will fade in and out slowly to the music.



2. Timer Switch

Slide the **Timer Switch** to select how long the mobile will play for. When the time is up the unit will enter sleep mode. Timer options include 5, 15 or 30 minutes.



3. Light & Motor Control Button

Press the **Light & Motor Control Button** to choose between 3 light patterns, and to make the mobile spin or stay still.



4. Music Button

Press the **Music Button** to play 4 songs and 40 melodies in a loop. Press the **Music Button** again to play the next song or melody in the loop. The light pattern will fade in and out slowly to the music.



5. Nature Sounds Button

Press the **Nature Sounds Button** to hear combinations of nature sounds and white noise. The light pattern will fade in and fade out slowly with the sounds.



6. Volume Control Buttons

Press the **Volume Control Buttons** (+) (-) to turn the volume up or down.



7. Sound Sensor

When the **Lullaby Lambs Mobile** is in sleep mode, nature sounds or soft melodies will play when baby's cry is detected.



8. Remote Control

The **Remote Control** can start, pause and control the volume within 30 feet / 9 metres of the mobile. Be sure there are no obstructions directly between the **Remote Control** and the Remote Receiver. The **Remote Control** is disabled after 12 hours without input.



NOTE: Bright sunlight, artificial light and low battery power may reduce the Mobile's sensitivity to the **Remote Control**. To increase the reliability, reduce ambient light near the Mobile and make sure the batteries have power.

MELODY LIST

1. Listen to the Mockingbird
2. Blue Danube Waltz - Strauss
3. Grandfather's Clock
4. Cradle Song - Mozart
5. Clair de Lune - Debussy
6. Canon In D - Pachelbel
7. Minuet in G Major - Beethoven
8. Berceuse, Op 57 - Chopin
9. Give My Regards to Broadway
10. Moonlight Sonata - Beethoven
11. Swan Lake Waltz - Tchaikovsky
12. Nocturne Op. 9 No. 2 - Chopin
13. Kinderszenen - Schumann
14. Berceuse - Brahms
15. Ode to Joy - Beethoven
16. Turkish March - Mozart
17. Sonata No. 16 - Mozart
18. Serenade - Haydn
19. Fur Elise - Beethoven
20. Cello Suite No. 1 in G Major - Bach
21. Sleeping Beauty Waltz - Tchaikovsky
22. Greensleeves
23. Did You Ever See a Lassie?
24. Spring Song - Mendelssohn
25. Hush Little Baby
26. Mary Had a Little Lamb
27. Little Bo Beep
28. Are You Sleeping?
29. Bicycle Built for Two

30. Eine Kleine Nachtmusik - Mozart
31. Toyland
32. While Strolling Through the Park
33. To a Wild Rose
34. Spring - Vivaldi
35. Ride a Cock Horse to Banbury Cross
36. Rock-a-Bye Baby
37. White Coral Bells
38. An Irish Lullaby
39. Glow Worm
40. Winkum, Winkum

SING-ALONG SONG LYRICS

SONG 1

Twinkle, twinkle, little star,
How I wonder what you are.
Up above the world so high,
Like a diamond in the sky.
Twinkle, twinkle, little star,
How I wonder what you are.

SONG 2

Little one, little one, it's time to rest.
Lay down your head and close your eyes.

SONG 3

The stars are twinkling in the sky,
While the moon is perched and watches the world go by.

SONG 4

Hush, little baby, don't say a word.
It's time to sleep and have sweet dreams.

CARE & MAINTENANCE

1. Keep the unit clean by wiping it with a slightly damp cloth.
2. Keep the unit out of direct sunlight and away from any direct heat sources.
3. Remove the batteries if the unit will not be in use for an extended period of time.
4. Do not drop the unit on hard surfaces and do not expose the unit to moisture or water.

TROUBLESHOOTING

If for some reason the program/activity stops working or malfunctions, please follow these steps:

1. Please turn the unit **OFF**.
2. Interrupt the power supply by removing the batteries.
3. Let the unit stand for a few minutes, then replace the batteries.
4. Turn the unit **ON**. The unit should now be ready to play with again.
5. If the product still does not work, install a brand new set of batteries.

If the problem persists, please contact our Consumer Services Department and a service representative will be happy to help you

CONSUMER SERVICES

Creating and developing **VTech®** products is accompanied by a responsibility that we at **VTech®** take very seriously. We make every effort to ensure the accuracy of the information, which forms the value of our products. However, errors sometimes can occur. It is important for you to know that we stand behind our products and encourage you to call our Consumer Services Department with any problems and/or suggestions that you might have. A service representative will be happy to help you.

UK Customers:

Phone: 0330 678 0149 (from UK) or +44 330 678 0149 (outside UK)
Website: www.vtech.co.uk/support

Australian Customers:

Phone: 1800 862 155
Website: support.vtech.com.au

NZ Customers:

Phone: 0800 400 785
Website: support.vtech.com.au

PRODUCT WARRANTY/ CONSUMER GUARANTEES

UK Customers:

Read our complete warranty policy online at vtech.co.uk/warranty.

Australian Customers:

**VTECH ELECTRONICS (AUSTRALIA) PTY LIMITED –
CONSUMER GUARANTEES**

Under the Australian Consumer Law, a number of consumer guarantees apply to goods and services supplied by VTech Electronics (Australia) Pty Limited. Please refer to vtech.com.au/consumerguarantees for further information.

**Visit our website for more
information about our products,
downloads, resources and more.**

www.vtech.co.uk
www.vtech.com.au

